

# Specialty Item

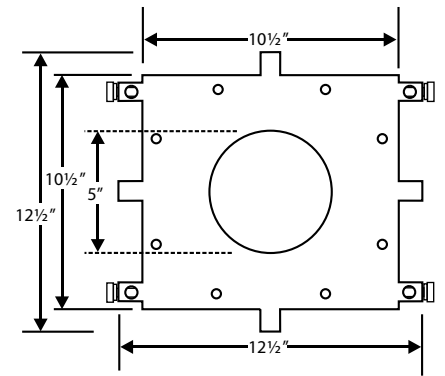
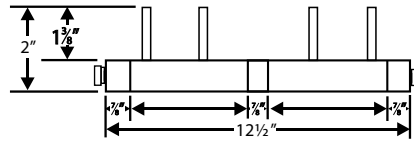
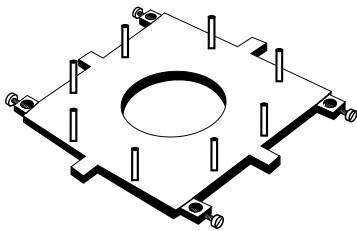
# PLUMBEREX

SPECIALTY PRODUCTS INC.  
Engineering Smart Solutions

## SPECIFICATION SHEET

PROJECT	
DWG #	
ITEM #	

## FLOOR SINK CARRIER™

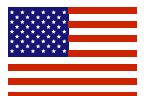


### FLOOR SINK INSTALLATION SPECIFICATION

All floor sinks to be installed before concrete flooring is poured, to guarantee a one time, solid monolithic pour around every sink. No patchwork is to be allowed after flooring has been poured. All floor sink fixtures, traps and joints are to be pressure tested for leaks before concealing, as per all plumbing codes. No metal to metal contact shall be accepted as support of floor sink installation. For professional monolithic floors and secure, non metal to metal contact floor fixture installations, install Model #700 Floor Sink Carrier™ manufactured by Plumberex Specialty Products, Inc.

COMMENTS:

PART #	COLOR	DIMENSIONS
700	ABS Plastic	Floor Sink Carrier will fit 2", 3" & 4" Sink Connections



MADE IN USA

**PLUMBEREX**  
SPECIALTY PRODUCTS INC.

P.O. Box 1684 Palm Springs, CA 92263 (760) 343-7363 1-800-475-8629 FAX (760)343-7366  
Plumberex Specialty Products, Inc. Reserves the right to make changes or improvements at any time without notice.

© 2006-2013 Plumberex Specialty Products, Inc.